



Essential Oils

## Grapefruit, Essential Oil



VEGAN



CRUELTY-FREE

### What can it be used in?

Aftersun	All Beauty & Personal Care
Body Balm	Body Care
Body Cleanser	Body Gel
Body Mist	Body Polish
Body Salve	Body Toner
Body Wash	Conditioner
Eye Care	Eye Cream
Eye Gel	Eye Makeup Remover
Eye Mask	Eye Serum
Face Care	Face Mist
Face Moisturiser	Face Oil
Face Scrub	Face Serum
Facial Cleanser	Facial Toner
Hair Care	Hair Cream
Hair Gel	Hair Mist
Hair Oil	Hair Spray
Lip Balm	Lip Care
Lip Mask	Lip Oil
Lip Scrub	Shampoo

**Product code**  
SQ-EO011

**Manufacturing Method**  
Cold Pressed

**Origin**  
Argentina  
South America

**Scent**  
Citrus

**Colour**  
Yellow, Orange, Orange-Red

**INCI Listing**  
Citrus Grandis Peel Oil

**CAS Number**  
90045-43-5 / 8016-20-4

**EINCS**  
289-904-6 / -

**Customs Tariff Code**  
3301 1920 00

## Skin Benefits

Grapefruit, Essential Oil is commonly used in skincare products due to its astringent and toning properties. It can help balance oily skin, reduce the appearance of pores, and promote a more even complexion. The oil's uplifting scent also makes it a popular choice for bath products like bath oils and shower gels, providing a refreshing and invigorating experience. In aromatherapy, Grapefruit (Pink) Essential Oil is known for its mood-enhancing properties. It can be used in diffuser blends, massage oils, or personal inhalers to create an uplifting and energising atmosphere.

## Functionality

### Anti-Inflammatory

Powerful anti-inflammatory properties help soothe and calm irritated skin, reducing redness and inflammation, whilst providing relief from discomfort and promoting a balanced complexion for healthier-looking skin.

### Cooling

Provides a refreshing and cooling sensation to the skin, helping to alleviate heat and discomfort. Ideal for use in products designed to soothe sunburns or calm irritated skin.

## Extraction process

Cold-pressed extraction is a method used to extract natural oils from various plant-based sources. It involves applying mechanical pressure to the source material without the use of heat or chemicals, resulting in a pure and unrefined oil.

## Hair Benefits

Grapefruit, Essential Oil can be used in hair care products to provide a fresh and invigorating scent. Its uplifting properties can help promote a positive mood and create a stimulating experience during hair care routines. The oil can be added to shampoos, conditioners, or hair mists to impart a refreshing fragrance and invigorate the senses. Additionally, Grapefruit, Essential Oil can contribute to scalp health by providing clarifying and toning benefits, promoting a clean and balanced environment for hair growth.

### Antimicrobial

With potent antimicrobial features, it effectively combats harmful microbes, preventing infections and promoting skin health. It supports a clean and clear complexion, safeguarding against unwanted bacteria.

### Energising

Provides a boost of energy and revitalisation, helping to combat fatigue and lethargy. This can lead to a refreshed and invigorated appearance, both for the skin and hair.

## MANUFACTURING FLOW & INCI STATEMENT

PRODUCT NAME: **Grapefruit, Essential Oil**

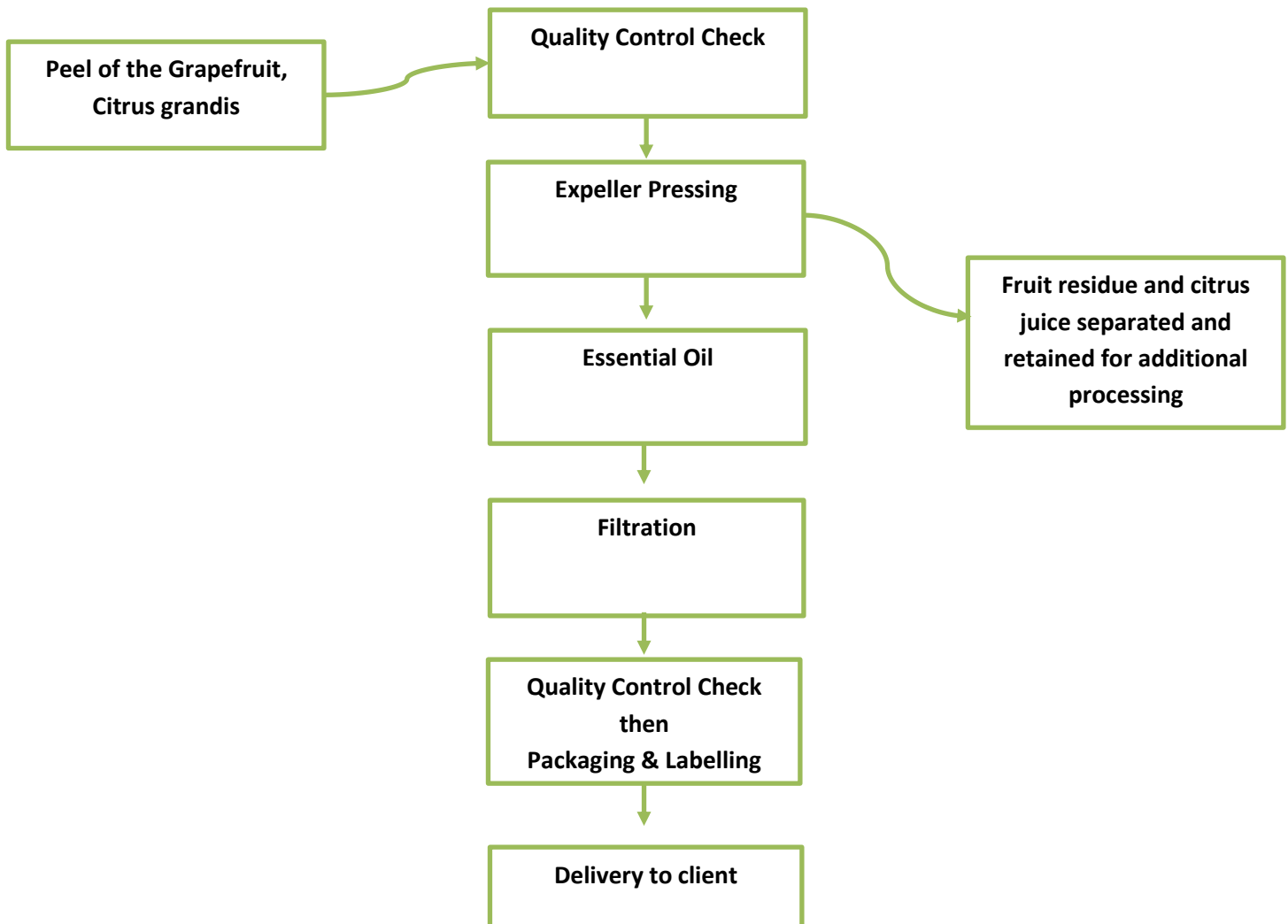
PRODUCT CODE: SQ-EO011

### INCI STATEMENT

Youwish can hereby confirm the following composition breakdown & manufacturing process flow.

INCI Name	% Inclusion	CAS Number
Citrus Grandis Peel Oil	100	90045-43-5 / 8016-20-4

**MANUFACTURING FLOW**



## SPECIFICATION SHEET

**PRODUCT NAME:** Grapefruit, Essential Oil

PRODUCT INCI: CITRUS GRANDIS PEEL OIL

PRODUCT CODE: SQ-EO011

CAS NUMBER: 90045-43-5 / 8016-20-4

EINECS NUMBER: 289-904-6 / -

SHELF LIFE / BEST BEFORE: 24 MONTHS

ANALYTICAL DETAILS	RANGE
APPEARANCE	LIQUID, RED – ORANGE
ODOUR	CHARACTERISTIC
SPECIFIC GRAVITY @ 20°C	0.845 – 0.865
REFRACTIVE INDEX @ 20°C	1.467 – 1.487
OPTICAL ROTATION (°C)	+90.0 TO +96.0

### STORAGE CONDITIONS

STORE IN A COOL DRY PLACE AWAY FROM HEAT & SUNLIGHT

DATE	ISSUED BY	VERSION	REASON FOR UPDATE
31/05/2024	J. G	2.0	Changes in CAS/EINCS number.



## CERTIFICATE OF CONFORMITY WITH IFRA STANDARDS

This Certificate assesses the conformity of the fragrance mixture with IFRA Standards and provides restrictions for use as necessary. It is based only on those materials subject to IFRA Standards for the toxicity endpoints described in each Standard.

This Certificate does therefore not replace a comprehensive safety assessment of the fragrance mixture.

### CERTIFYING PARTY:

YouWish

Transistorstraat 91-021,  
322CL, Almere,  
The Netherlands

### SCOPE OF THE CERTIFICATE:

Grapefruit, Essential Oil SQ-EO011

### COMPULSORY INFORMATION:

We certify that the above mixture is in compliance with the Standards of the INTERNATIONAL FRAGRANCE ASSOCIATION (IFRA), up to and including the 51st Amendment to the IFRA Code of Practice (published June 2023), provided it is used in the following categories at a maximum concentration level of:

IFRA Categories [see Annex 1 below for details]	Maximum Level of use (%)
IFRA Category 1	4.00%
IFRA Category 2	4.00%
IFRA Category 3	4.00%
IFRA Category 4	4.00%
IFRA Category 5A	4.00%
IFRA Category 5B	4.00%
IFRA Category 5C	4.00%
IFRA Category 5D	4.00%
IFRA Category 6	4.00%
IFRA Category 7A	77.00%
IFRA Category 7B	4.00%
IFRA Category 8	4.00%
IFRA Category 9	Not limited
IFRA Category 10A	Not limited
IFRA Category 10B	4.00%
IFRA Category 11A	17.00%
IFRA Category 11B	4.00%
IFRA Category 12	Not limited

For other kinds of application or use at higher concentration levels, a new evaluation can be needed; please contact Youwish.

### ADDITIONAL INFORMATION ABOUT INGREDIENTS

Information about presence and concentration of fragrance ingredients subject to IFRA Limits in the fragrance mixture Grapefruit, Essential Oil SQ-EO011 is as follows:

Materials with an IFRA limit:	CAS number(s):	Concentration (%) in the fragrance mixture
Bergapten (5-Methoxypsoralen, 5-MOP)	484-20-8, 207-604-5	0.0100%
Carvone	99-49-0, 2244-16-8, 6485-40-1	0.0100%
Citral	5392-40-5, 141-27-5, 106-26-3	0.1000%
Citronellal	106-23-0, 5949-05-3	0.1000%
Geraniol	106-24-1	0.0100%
Grapefruit oil expressed	8016-20-4, 90045-43-5	100.0000%
p-Mentha-1,8-dien-7-al	2111-75-3	0.0100%

Regulatory Affairs Department



## ANNEX 1

Below is an extract of information provided by IFRA in relation to types of application present in each IFRA Category. Additional information about IFRA Categories can be found in the Guidance to IFRA Standards, issued by IFRA.

IFRA Category	Product Type
IFRA Category 1	Lip Products of all types (solid and liquid lipsticks, balms, clear or colored, etc.); Childrens toys
IFRA Category 2	Deodorant and antiperspirant products of all types including any product with intended or reasonably foreseeable use on the axillae or labelled as such (spray, stick, roll-on, under-arm, deo-cologne, etc.); Body sprays (including body mist)
IFRA Category 3	Eye products of all types (eye shadow, mascara, eyeliner, eye make-up, eye masks, eye pillows, etc.) including eye care and moisturizer; Facial make up and foundation; Make-up remover for face and eyes; Nose pore strips; Wipes or refreshing tissues for face, neck, hands, body; Body and face paint (for children and adults); Facial masks for face and around the eyes
IFRA Category 4	Hydroalcoholic and nonhydroalcoholic fine fragrance of all types (Eau de Toilette, Parfum, Cologne, solid perfume, fragrancing cream, etc.), aftershaves of all types (except creams and balms ); Fragranced bracelets; Ingredients of perfume kits and fragrance mixtures for cosmetic kits; Scent pads, foil packs; Scent strips for hydroalcoholic products
IFRA Category 5A	Body creams, oils, lotions of all types; Foot care products (creams and powders); Insect repellent (intended to be applied to the skin); All powders and talc (excluding baby powders and talc)
IFRA Category 5B	Facial toner; Facial moisturizers and creams (including care products for beard and mustache)
IFRA Category 5C	Hand cream; Nail care products including cuticle creams, nail lacquer remover, etc.; Hand sanitizers
IFRA Category 5D	Baby cream/lotion, baby oil, baby powders and talc
IFRA Category 6	Toothpaste; Mouthwash, including breath sprays; Toothpowder, strips, mouthwash tablets
IFRA Category 7A	Hair permanent or other hair chemical treatments (rinse-off) (e.g., relaxers), including rinse-off hair dyes
IFRA Category 7B	Hair sprays of all types (pumps, aerosol sprays, etc.); Hair styling aids non sprays (mousse, gels, leave-on conditioners); Hair permanent or other hair chemical treatments (leave-on) (e.g., relaxers), including leave-on hair dyes; Shampoo - Dry (waterless shampoo); Hair deodorizer, hair perfume
IFRA Category 8	Intimate wipes; Intimate deodorant spray; Tampons; Baby wipes; Toilet paper (wet)
IFRA Category 9	Bar soap; Shampoo of all types; Cleanser for face (rinse-off); Conditioner (rinse-off); Liquid soap; Body washes and shower gels of all types; Baby wash, bath, shampoo; Bath gels, foams, mousses, salts, oils and other products added to bathwater (such as bath bombs); Foot care products (feet are placed in a bath for soaking); Shaving creams of all types (stick, gels, foams, etc.); All depilatories (including facial) and waxes for mechanical hair removal
IFRA Category 10A	Hand wash laundry detergent (including concentrates); Laundry pre-treatment of all types (e.g. paste, sprays, sticks); Hand dishwashing detergent (including concentrates); Hard surface cleaners of all types (bathroom and kitchen cleansers, furniture polish, etc.); Machine laundry detergents with skin contact (e.g., liquids, powders) including concentrates; Toilet seat wipes; Fabric softeners of all types excluding fabric softener sheets; Household cleaning products, other types including fabric cleaners, soft surface cleaners, carpet cleaners, furniture polishes sprays and wipes, leather cleaning wipes, stain removers, fabric enhancing sprays, treatment products for textiles (e.g., starch sprays, fabric treated with fragrances after wash, deodorizers for textiles or fabrics); Floor wax; Fragranced oil for lamp ring, reed diffusers, pot-pourri, liquid refills for air fresheners (non-cartridge systems), etc.; Ironing water (Odorized distilled water); Dry cleaning kits (involving manual application on the textile)
IFRA Category 10B	Animal sprays – sprays applied to animals of all types; Air freshener sprays, manual, including aerosol and pump; Aerosol/spray insecticides
IFRA Category 11A	Feminine hygiene conventional pads, liners, interlabial pads; Baby diapers; Incontinence pant, pad; Toilet paper (dry)
IFRA Category 11B	Tights with moisturizers; Scented socks, gloves; Facial tissues (dry tissues); Napkins; Pillow spray; Paper towels; Wheat bags; Facial masks (paper/protective) e.g., surgical masks not used as medical device; Fertilizers, solid (pellet or powder)
IFRA Category 12	Candles of all types (including encased); Laundry detergents for machine wash with minimal skin contact (e.g. Liquid tabs, pods); Automated air fresheners and fragrancing of all types (concentrated aerosol with metered doses (range 0.05-0.5mL/spray), plug-ins, closed systems, solid substrate, membrane delivery, electrical, powders, fragrancing sachets, incense, liquid refills (cartridge), air freshening crystals, solid non aerosol car diffuser); Air delivery systems; Cat litter; Cell phone cases; Deodorizers/maskers not intended for skin contact (e.g., fabric drying machine deodorizers, carpet powders); Dry cleaning kits (placed in the dryer); Dryer sheets and fabric softener sheets; Fuels; Insecticides (e.g., mosquito coil, paper, electrical, for clothing) excluding aerosols/sprays; Joss sticks or incense sticks; Dishwash detergent and deodorizers – for machine wash; Olfactive board games; Paints; Plastic articles (excluding toys); Scratch and sniff; Scent pack; Scent delivery system (using dry air technology); Shoe polishes; Rim blocks (toilet); Toilet gel; Scent beads

## ALLERGEN 2023 DECLARATION

We hereby confirm that the following item contains the components listed below. Stated are the total levels added plus levels from natural ingredients. The information is supplied to enable compliance with Commission Regulation (EU) 2023/1545.

### SQ-EO011 Grapefruit, Essential Oil

Ingredient	CAS	EC	Concentration (%)
Beta-Caryophyllene	87-44-5	201-746-1	0.2%
Carvone	99-49-0, 6485-40-1, 2244-16-8	202-759-5, 229-352-5, 218-827-2	0.01%
Citral	141-27-5, 106-26-3, 5392-40-5	205-476-5, 203-379-2, 226-394-6	0.1%
Geraniol	106-24-1	203-377-1	0.01%
Geranyl Acetate	105-87-3	203-341-5	0.1%
Limonene	138-86-3, 7705-14-8, 5989-54-8, 5989-27-5	205-341-0, 231-732-0, 227-815-6, 227-813-5	97%
Linalool	78-70-6	201-134-4	0.1%
Pinene	80-56-8, 7785-70-8, 127-91-3, 18172-67-3	201-291-9, 232-087-8, 204-872-5, 242-060-2	1.3%
Terpineol	8000-41-7, 98-55-5, 138-87-4, 586-81-2	232-268-1, 202-680-6, 205-342-6, 209-584-3	0.01%
Terpinolene	586-62-9	209-578-0	0.01%

Please note components <1ppm are not shown.

**Regulatory Affairs Department**

## SAFETY DATA SHEET

In accordance with REACH Regulation EC No.1907/2006

**Product:** Grapefruit, Essential Oil SQ-EO011

**Version:** 1

### Section 1. Identification of the substance or the mixture and of the supplier

#### 1.1 Product Identifier

**Product identifier:** Grapefruit, Essential Oil; CAS: 90045-43-5

**Other identifiers:** Citrus Grandis Peel Oil

#### 1.2 Relevant identified uses of the substance or mixture and uses advised against

**Product uses:** Flavours, Fragrances, Food Use, Cosmetics

#### 1.3 Details of the supplier of the safety data sheet

**Company name:** YouWish

**Company address:** Transistorstraat 91-021,  
322CL, Almere,  
The Netherlands

**Contact:** Regulatory Affairs

**E-Mail address:** [www.youwish.nl](http://www.youwish.nl) / [contact@youwish.nl](mailto:contact@youwish.nl)

**Company phone:** +31 36 2036384

#### 1.4 Emergency telephone number

**Emergency phone:** +44 (0)1765 522120

### Section 2. Hazards identification

#### 2.1 Classification of the substance or mixture

##### **Classification under Regulation (EC) No 1272/2008**

**Class and category of danger:** Flammable Liquid, Hazard Category 3  
Skin Corrosion / Irritation Category 2  
Sensitization - Skin Category 1  
Aspiration Hazard Category 1  
Hazardous to the Aquatic Environment - Acute Hazard Category 1  
Hazardous to the Aquatic Environment - Long-term Hazard Category 3  
H226, Flammable liquid and vapour.  
H304, May be fatal if swallowed and enters airways.  
H315, Causes skin irritation.  
H317, May cause an allergic skin reaction.  
H400, Very toxic to aquatic life.  
H412, Harmful to aquatic life with long lasting effects.

## SAFETY DATA SHEET

In accordance with REACH Regulation EC No.1907/2006

**Product:** Grapefruit, Essential Oil SQ-EO011

**Version:** 1

### 2.2 Label elements

#### Classification under Regulation (EC) No 1272/2008

**Signal word:** Danger

**Hazard statements:** H226, Flammable liquid and vapour.  
H304, May be fatal if swallowed and enters airways.  
H315, Causes skin irritation.  
H317, May cause an allergic skin reaction.  
H400, Very toxic to aquatic life.  
H412, Harmful to aquatic life with long lasting effects.

**M factor:** None

**Supplemental Information:** None

**Precautionary statements:** P210, Keep away from heat, sparks, open flames and hot surfaces. - No smoking.  
P233, Keep container tightly closed.  
P240, Ground/bond container and receiving equipment.  
P241, Use explosion-proof electrical, ventilating and lighting equipment.  
P242, Use only non-sparking tools.  
P243, Take precautionary measures against static discharge.  
P261, Avoid breathing vapour or dust.  
P264, Wash hands and other contacted skin thoroughly after handling.  
P272, Contaminated work clothing should not be allowed out of the workplace.  
P273, Avoid release to the environment.  
P280, Wear protective gloves/eye protection/face protection.  
P301/310, IF SWALLOWED: Immediately call a POISON CENTER or doctor/physician.  
P303/361/353, IF ON SKIN (or hair): Remove/take off immediately all contaminated clothing. Rinse skin with water/shower.  
P331, Do not induce vomiting.  
P333/313, If skin irritation or rash occurs: Get medical advice/attention.  
P362, Take off contaminated clothing and wash before reuse.  
P370/378, In case of fire: Use carbon dioxide, dry chemical, foam for extinction.  
P391, Collect spillage.  
P403/235, Store in a well-ventilated place. Keep cool.  
P405, Store locked up.  
P501, Dispose of contents/container to approved disposal site, in accordance with local regulations.

**SAFETY DATA SHEET**

In accordance with REACH Regulation EC No.1907/2006

**Product:** Grapefruit, Essential Oil SQ-EO011  
**Version:** 1

**Pictograms:**



**2.3 Other hazards**

**Other hazards:** Hydrocarbon Concentration %: 99.9000%

**Section 3. Composition / information on ingredients**

**3.1 Substances**

**Product identifier:** Grapefruit, Essential Oil; CAS: 90045-43-5

**Contains:**

Name	CAS	EC	REACH Registration No.	%	Classification for (CLP) 1272/2008	Specific Conc. Limits, M-factors and ATEs
d-Limonene	5989-27-5	227-813-5		50-100%	Flam. Liq. 3-Skin Irrit. 2-Skin Sens. 1B-Asp. Tox 1-Aquatic Acute 1-Aquatic Chronic 3; H226-H304-H315-H317-H400-H412,-	M = 1
Myrcene	123-35-3	204-622-5		1-<5%	Flam. Liq. 3-Skin Irrit. 2-Eye Irrit. 2-Asp. Tox 1-Aquatic Acute 1-Aquatic Chronic 2; H226-H304-H315-H319-H400-H411,-	M = 1
alpha-Pinene	80-56-8	201-291-9		1-<5%	Flam. Liq. 3-Acute Tox. 4-Skin Irrit. 2-Skin Sens. 1B-Asp. Tox 1-Aquatic Acute 1-Aquatic Chronic 1; H226-H302-H304-H315-H317-H410,-	M = 1-M = 1-oral: ATE = 500 mg/kg bw
beta-Caryophyllene	87-44-5	201-746-1		0.1-<1%	Skin Sens. 1B-Asp. Tox 1;H304-H317,-	
Citral	5392-40-5	226-394-6		0.1-<1%	Skin Irrit. 2-Eye Irrit. 2-Skin Sens. 1;H315-H317-H319,-	
Citronellal	106-23-0	203-376-6		0.1-<1%	Skin Irrit. 2-Eye Irrit. 2-Skin Sens. 1B;H315-H317-H319,-	dermal: ATE = 2500 mg/kg bw-oral: ATE = 2500 mg/kg bw
Linalool	78-70-6	201-134-4		0.1-<1%	Skin Irrit. 2-Eye Irrit. 2-Skin Sens. 1B;H315-H317-H319,-	oral: ATE = 2790 mg/kg bw
Geranyl acetate	105-87-3	203-341-5		0.1-<1%	Skin Irrit. 2-Skin Sens. 1B-Aquatic Chronic 3; H315-H317-H412,-	

## SAFETY DATA SHEET

In accordance with REACH Regulation EC No.1907/2006

**Product:** Grapefruit, Essential Oil SQ-EO011

**Version:** 1

### Section 4. First-aid measures

#### 4.1 Description of first aid measures

**Inhalation:** Remove from exposure site to fresh air, keep at rest, and obtain medical attention.  
**Eye exposure:** Flush immediately with water for at least 15 minutes. Contact physician if symptoms persist.  
**Skin exposure:** IF ON SKIN (or hair): Remove/take off immediately all contaminated clothing. Rinse skin with water/shower.  
**Ingestion:** IF SWALLOWED: Immediately call a POISON CENTER or doctor/physician.

#### 4.2 Most important symptoms and effects, both acute and delayed

May be fatal if swallowed and enters airways.  
Causes skin irritation.  
May cause an allergic skin reaction.

#### 4.3 Indication of any immediate medical attention and special treatment needed

None expected, see Section 4.1 for further information.

### Section 5: Firefighting measures

#### 5.1 Extinguishing media

Suitable media: Carbon dioxide, Dry chemical, Foam.

#### 5.2 Special hazards arising from the substance or mixture

In case of fire, may be liberated: Carbon monoxide, Unidentified organic compounds.

#### 5.3 Advice for fire fighters:

In case of insufficient ventilation, wear suitable respiratory equipment.

### Section 6. Accidental release measures

#### 6.1 Personal precautions, protective equipment and emergency procedures:

Avoid inhalation. Avoid contact with skin and eyes. See protective measures under Section 7 and 8.

#### 6.2 Environmental precautions:

Keep away from drains, surface and ground water, and soil.

#### 6.3 Methods and material for containment and cleaning up:

Remove ignition sources. Provide adequate ventilation. Avoid excessive inhalation of vapours. Contain spillage immediately by use of sand or inert powder. Dispose of according to local regulations.

## SAFETY DATA SHEET

In accordance with REACH Regulation EC No.1907/2006

**Product:** Grapefruit, Essential Oil SQ-EO011

**Version:** 1

### 6.4 Reference to other sections:

Also refer to sections 8 and 13.

## Section 7. Handling and storage

### 7.1 Precautions for safe handling:

Keep away from heat, sparks, open flames and hot surfaces. - No smoking.

### 7.2 Conditions for safe storage, including any incompatibilities:

Store in a well-ventilated place. Keep container tightly closed. Keep cool. Ground/bond container and receiving equipment. Use explosion-proof electrical, ventilating and lighting equipment. Use only non-sparking tools. Take precautionary measures against static discharge.

### 7.3 Specific end use(s):

Flavours, Fragrances, Food Use, Cosmetics: Use in accordance with good manufacturing and industrial hygiene practices.

## Section 8. Exposure controls/personal protection

### 8.1 Control parameters

Workplace exposure limits: Not Applicable

### 8.2 Exposure Controls

#### Eye / Skin Protection

Wear protective gloves/eye protection/face protection

#### Respiratory Protection

Under normal conditions of use and where adequate ventilation is available to prevent build up of excessive vapour, this material should not require special engineering controls. However, in conditions of high or prolonged use, or high temperature or other conditions which increase exposure, the following engineering controls can be used to minimise exposure to personnel: a) Increase ventilation of the area with local exhaust ventilation. b) Personnel can use an approved, appropriately fitted respirator with organic vapour cartridge or canisters and particulate filters. c) Use closed systems for transferring and processing this material.

Also refer to Sections 2 and 7.

## Section 9. Physical and chemical properties

### 9.1 Information on basic physical and chemical properties

<b>Physical State/Colour:</b>	Liquid, yellow to orange to red/orange
<b>Odour:</b>	Characteristic
<b>Odour threshold:</b>	Not determined
<b>Melting point / freezing point:</b>	Not determined
<b>Boiling point or initial boiling point and boiling range:</b>	Not determined

## SAFETY DATA SHEET

In accordance with REACH Regulation EC No.1907/2006

**Product:** Grapefruit, Essential Oil SQ-EO011

**Version:** 1

**Flammability:** Not determined

**Lower and upper explosion limit:** Not determined

**Flash point:** > 44 °C

**Auto-ignition temperature:** Not determined

**Decomposition temperature:** Not relevant

**pH:** Not determined

**Kinematic viscosity:** Not determined

**Solubility:** Not determined

**Partition coefficient: n-octanol/water (log value):** Not determined

**Vapour pressure:** Not determined

**Density and/or relative density:** 0.8400 - 0.8650

**Relative vapour density:** Not determined

**Particle characteristics:** Not determined

**9.2 Other information:** None available

### Section 10. Stability and reactivity

#### **10.1 Reactivity:**

Presents no significant reactivity hazard, by itself or in contact with water.

#### **10.2 Chemical stability:**

Good stability under normal storage conditions.

#### **10.3 Possibility of hazardous reactions:**

Not expected under normal conditions of use.

#### **10.4 Conditions to avoid:**

Avoid extreme heat.

#### **10.5 Incompatible materials:**

Avoid contact with strong acids, alkalis or oxidising agents.

#### **10.6 Hazardous decomposition products:**

Not expected.

### Section 11. Toxicological information

#### **11.1 Information on hazard classes as defined in Regulation (EC) No 1272/2008**

##### **Acute Toxicity:**

Based on available data the classification criteria are not met.

Acute Toxicity Oral Not Applicable

Acute Toxicity Dermal Not Applicable

Acute Toxicity Inhalation Not Available

**Skin corrosion/irritation:** Skin Corrosion / Irritation Category 2



## SAFETY DATA SHEET

In accordance with REACH Regulation EC No.1907/2006

**Product:** Grapefruit, Essential Oil SQ-EO011

**Version:** 1

**Serious eye damage/irritation:** Based on available data the classification criteria are not met.  
**Respiratory or skin sensitisation:** Sensitization - Skin Category 1  
**Germ cell mutagenicity:** Based on available data the classification criteria are not met.  
**Carcinogenicity:** Based on available data the classification criteria are not met.  
**Reproductive toxicity:** Based on available data the classification criteria are not met.  
**STOT-single exposure:** Based on available data the classification criteria are not met.  
**STOT-repeated exposure:** Based on available data the classification criteria are not met.  
**Aspiration hazard:** Aspiration Hazard Category 1

### Information about hazardous ingredients in the mixture

Not Applicable

Refer to Sections 2 and 3 for additional information.

### 11.2 Information on other hazards

Not Applicable

## Section 12. Ecological information

### 12.1 Toxicity:

Very toxic to aquatic life.

Harmful to aquatic life with long lasting effects.

**12.2 Persistence and degradability:** Not available

**12.3 Bioaccumulative potential:** Not available

**12.4 Mobility in soil:** Not available

### 12.5 Results of PBT and vPvB assessment:

This substance does not meet the PBT/vPvB criteria of REACH, annex XIII.

**12.6 Endocrine disrupting properties:** Not Applicable

**12.7 Other adverse effects:** Not available

## Section 13. Disposal considerations

### 13.1 Waste treatment methods:

Dispose of in accordance with local regulations. Avoid disposing into drainage systems and into the environment. Empty containers should be taken to an approved waste handling site for recycling or disposal.

## Section 14. Transport information

	14.1 UN number or ID number:	14.2 UN Proper Shipping Name:	14.3 Transport hazard class (es):	Sub Risk:	14.4 Packing Group:
UN Model Regulations	UN1197	EXTRACTS, LIQUID (d-Limonene)	3	-	III

**SAFETY DATA SHEET**

In accordance with REACH Regulation EC No.1907/2006

**Product:** Grapefruit, Essential Oil SQ-EO011  
**Version:** 1

IMDG	UN1197	EXTRACTS, LIQUID (d-Limonene) MARINE POLLUTANT	3	-	III
ADR,RID,ADN	UN1197	EXTRACTS, LIQUID	3	-	III
ICAO TI	UN1197	EXTRACTS, LIQUID (d-Limonene)	3	-	III

**14.5 Environmental hazards:** This is classified as an environmentally hazardous substance under the UN Model Regulations. This is classified as a Marine Pollutant under the IMDG Code.

**14.6 Special precautions for user:** None additional

**14.7 Maritime transport in bulk according to IMO instruments:**  
Not applicable

**Section 15. Regulatory information**

**15.1 Safety, health and environmental regulations/legislation specific for the substance or mixture**  
None additional

**15.2 Chemical Safety Assessment**  
A Chemical Safety Assessment has not been carried out for this product.

**Section 16. Other information**

**Concentration % Limits:** SCI 2=9.69% SS 1=1.03% AH 1=10.01% EH A1=24.22% EH C3=9.06% EH C4=24.22%

**Total Fractional Values:** SCI 2=10.32 SS 1=97.00 AH 1=9.99 EH A1=4.13 EH C3=11.04 EH C4=4.13

**Key to revisions:**  
Not applicable

**Key to abbreviations:**

Abbreviation	Meaning
Acute Tox. 4	Acute Toxicity - Oral Category 4
Aquatic Acute 1	Hazardous to the Aquatic Environment - Acute Hazard Category 1
Aquatic Chronic 1	Hazardous to the Aquatic Environment - Long-term Hazard Category 1
Aquatic Chronic 2	Hazardous to the Aquatic Environment - Long-term Hazard Category 2
Aquatic Chronic 3	Hazardous to the Aquatic Environment - Long-term Hazard Category 3
Asp. Tox 1	Aspiration Hazard Category 1
Eye Irrit. 2	Eye Damage / Irritation Category 2
Flam. Liq. 3	Flammable Liquid, Hazard Category 3
H226	Flammable liquid and vapour.
H302	Harmful if swallowed.
H304	May be fatal if swallowed and enters airways.
H315	Causes skin irritation.
H317	May cause an allergic skin reaction.

## SAFETY DATA SHEET

In accordance with REACH Regulation EC No.1907/2006

**Product:** Grapefruit, Essential Oil SQ-EO011

**Version:** 1

H319	Causes serious eye irritation.
H400	Very toxic to aquatic life.
H410	Very toxic to aquatic life with long lasting effects.
H411	Toxic to aquatic life with long lasting effects.
H412	Harmful to aquatic life with long lasting effects.
P210	Keep away from heat, sparks, open flames and hot surfaces. - No smoking.
P233	Keep container tightly closed.
P240	Ground/bond container and receiving equipment.
P241	Use explosion-proof electrical, ventilating and lighting equipment.
P242	Use only non-sparking tools.
P243	Take precautionary measures against static discharge.
P261	Avoid breathing vapour or dust.
P264	Wash hands and other contacted skin thoroughly after handling.
P270	Do not eat, drink or smoke when using this product.
P272	Contaminated work clothing should not be allowed out of the workplace.
P273	Avoid release to the environment.
P280	Wear protective gloves/eye protection/face protection.
P301/310	IF SWALLOWED: Immediately call a POISON CENTER or doctor/physician.
P302/352	IF ON SKIN: Wash with plenty of soap and water.
P303/361/353	IF ON SKIN (or hair): Remove/take off immediately all contaminated clothing. Rinse skin with water/shower.
P305/351/338	IF IN EYES: Rinse cautiously with water for several minutes. Remove contact lenses, if present and easy to do. Continue rinsing.
P330	Rinse mouth.
P331	Do not induce vomiting.
P332/313	If skin irritation occurs: Get medical advice/attention.
P333/313	If skin irritation or rash occurs: Get medical advice/attention.
P337/313	If eye irritation persists: Get medical advice/attention.
P362	Take off contaminated clothing and wash before reuse.
P363	Wash contaminated clothing before reuse.
P370/378	In case of fire: Use carbon dioxide, dry chemical, foam for extinction.
P391	Collect spillage.
P403/235	Store in a well-ventilated place. Keep cool.
P405	Store locked up.
P501	Dispose of contents/container to approved disposal site, in accordance with local regulations.
Skin Irrit. 2	Skin Corrosion / Irritation Category 2
Skin Sens. 1	Sensitization - Skin Category 1
Skin Sens. 1B	Sensitization - Skin Category 1B

The information in this safety data sheet is to the best of our knowledge true and accurate but all data, instructions, recommendations and/or suggestions are made without guarantee.

Product Code	SQ-EO011
<b>Product Name</b>	<b>Grapefruit, Essential Oil</b>
Alcohol Status	Youwish can confirm that Grapefruit, Essential Oil is free of Alcohol.
Animal Testing	Youwish can confirm that Grapefruit, Essential Oil has not been Animal Tested for cosmetic purposes by or on behalf of the company, nor has any of its component parts named in the International Cosmetic Ingredient Dictionary & Handbook (11th Edition), 31st December 1990.
BSE/TSE Status	Youwish can confirm that Grapefruit, Essential Oil is not derived from Animal Origin, therefore a BSE/TSE statement is not applicable.
Calif Proposition 65	Youwish can confirm to their best of their knowledge that Grapefruit, Essential Oil contains beta-Myrcene / Myrcene which is listed on the Californian Proposition 65 list.
CAS Number	90045-43-5 / 8016-20-4
Chloramphenicol Residue	Youwish can confirm that Grapefruit, Essential Oil is free from Chloramphenicol residues.
CITES Status	Youwish can confirm that Grapefruit, Essential Oil is not endangered & therefore not applicable for CITES certification.
Classification, Labelling & Packaging (CLP)	Youwish can confirm that Grapefruit, Essential Oil complies with Regulation (EC) no 1272/2008; classification, labelling & packaging of substances and mixtures (CLP).
CMR Status	Youwish can confirm that Grapefruit, Essential Oil is not classified as carcinogenic, mutagenic or toxic according to regulation 1272/2008.
Cosmetic Status	Youwish can confirm that Grapefruit, Essential Oil is suitable for cosmetic application. It is not included in the list of substances prohibited in cosmetic products. Neither does it contain parabens, restricted preservatives, colorants or UV filters (Annex II - VI of EU Regulation 1223/2009).
Customs Tariff Code	3301 1920 00
EINCS Number	289-904-6 / -
Ethylene Oxide Status	Youwish can confirm that Ethylene Oxide is not being used in production process of Grapefruit, Essential Oil.
Food Status	Youwish can confirm that Grapefruit, Essential Oil is suitable for food application, only when the appropriate quantity/dilution is used. This material complies with European Food Regulations (i.e. 2023/915). Please note, if you intend on using this product as a food ingredient we insist you email our Technical Team before doing so for our opinion on the dilution applied to your finished product.
Functionality	Anti-Inflammatory, Antimicrobial, Cooling, Energising
Gluten Free	Youwish can confirm that Grapefruit, Essential Oil is not derived from, neither does it contain any Gluten ingredients.
Gluten Free Statement	Youwish can confirm that Grapefruit, Essential Oil is not derived from, neither does it contain any Gluten ingredients.
GMO (IP) Status	Youwish can confirm that Grapefruit, Essential Oil is not derived/produced from a raw material that has been genetically modified.
HACCP & GMP Statement	Youwish can confirm that Grapefruit, Essential Oil has been produced under Good Manufacturing Practices (GMP) and a HACCP system. Youwish is BRC certified.
Hair Benefits	Grapefruit, Essential Oil can be used in hair care products to provide a fresh and invigorating scent. Its uplifting properties can help promote a positive mood and create a stimulating experience during hair care routines. The oil can be added to shampoos, conditioners, or hair mists to impart a refreshing fragrance and invigorate the senses. Additionally, Grapefruit, Essential Oil can contribute to scalp health by providing clarifying and toning benefits, promoting a clean and balanced environment for hair growth.

Halal	Youwish can confirm this product is not Halal certified, however it does not contain any animal derived product or ingredient, hence it is HALAL applicable.
INCI Listing	Citrus Grandis Peel Oil
Irradiation Status	Youwish can confirm that Grapefruit, Essential Oil has not been irradiated at any stage of production.
Karanal Status	Youwish can confirm that Grapefruit, Essential Oil is free from Karanal.
Key Essential Fatty Acid Compounds	Alphas
Kosher	Youwish can confirm that Grapefruit, Essential Oil is not Kosher Certified.
Leaping Bunny	Youwish can confirm that Grapefruit, Essential Oil complies with the criteria of the Humane Cosmetics Standard, has not been tested or re-tested on animals for cosmetic purposes by or on behalf of Youwish.
Manufacturing Method	Cold Pressed
Methyk Salicylate Status	
Microbiological & PAH Status & Heavy Metals & Pesticides	Youwish can confirm that Grapefruit, Essential Oil does not have a micro specification because the product was sterilized in the production process. We can confirm that there is no detectable amounts of pesticides. It is produced from natural raw material and complies within the limits of the oil-related requirements of European Regulation 2023/915 regarding heavy metals, dioxins, dioxin-like PCBs, Benzo-a-pyrene & PAH.
Mycotoxins Status	Youwish can confirm that Grapefruit, Essential Oil is compliant with the requirements of the Regulation (EC) N° 2023/915. We can confirm this product is free from: Aflatoxins, Ergot alkaloids, Patulin, Alternaria toxins, Ochratoxin A, Fusarium toxins.
Nagoya Protocol	
Nanomaterials Status	Youwish can confirm with reference to Grapefruit, Essential Oil that no Nanomaterials were added at any stage of the manufacturing/production process, in accordance with EU Cosmetics Regulation.
Organic	Not applicable to this grade of product. Organic versions are available on request, please see our Organic category.
Origin Statement	Youwish can confirm that Grapefruit, Essential Oil Origin is Argentina.
Palm Status	Youwish can confirm that palm oil has not been used in the process of manufacturing Grapefruit, Essential Oil.
Parabens Status	Youwish can confirm that Grapefruit, Essential Oil is free from Parabens.
Product Page Intro	Introducing Grapefruit, Essential Oil. Native to the Caribbean, grapefruits were introduced to Florida in the early 19th century and soon became synonymous with sunny, coastal regions. Beyond its delightful fragrance, this oil boasts an array of cosmetic properties. Its antibacterial and antifungal qualities have made it a popular choice for acne-prone and oily skin, offering a refreshing and clarifying effect. Its astringent properties help tighten pores and balance oil production. And as a natural antioxidant, it shields the skin from free radical damage, preserving its youthful appearance. The beauty of grapefruit oil extends to addressing skin conditions like eczema and supporting the reduction of cellulite and stretch marks, making it a versatile and cherished addition to skincare routines worldwide. Contact us today for a quote or order a sample and elevate your products with Grapefruit, Essential Oil.
Product Status	Pure & Natural.
Pyrrolizidine Alkaloids Status	Youwish can confirm that Grapefruit, Essential Oil is free from any Pyrrolizidine Alkaloids.
REACH Status	01-2120119763-56-0000
Residual Solvents	Youwish can confirm that no solvents or preservatives we used in the production of Grapefruit, Essential Oil

Skin Benefits	Grapefruit, Essential Oil is commonly used in skincare products due to its astringent and toning properties. It can help balance oily skin, reduce the appearance of pores, and promote a more even complexion. The oil's uplifting scent also makes it a popular choice for bath products like bath oils and shower gels, providing a refreshing and invigorating experience. In aromatherapy, Grapefruit, Essential Oil is known for its mood-enhancing properties. It can be used in diffuser blends, massage oils, or personal inhalers to create an uplifting and energising atmosphere.
SVHC (Substances of Very High Concern) & Impurities Status	Youwish can confirm that Grapefruit, Essential Oil is free from of SVHC and any impurities.
Vegan	Youwish can confirm that Grapefruit, Essential Oil is suitable for Vegans.